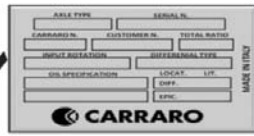


# How to Identify a Carraro Axle?

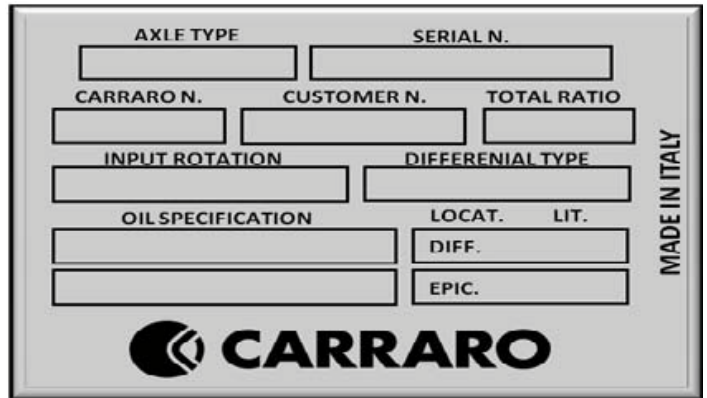
## How do I know if I have a Carraro axle in my machine?

**Carraro axles** are fitted with a rectangular metal identification plate located on the back side of the axle beam or the right side of the machine



## When I find the Carraro ID plate, what am I looking at?

Each Carraro unit is given a unique identification plate for displaying its individual characteristics. The plate will include all the necessary model, serial and part number information to properly identify your **Carraro** axle.



## Now that I have identified my Carraro axle, where can I get parts or service?

That's where we come in. You can give us a call, fax or email us a description or picture of the tag and we'll take it from there. By utilizing our extensive database of Carraro parts and in depth product knowledge, a Joseph Industries sales team member will be able to assist you with your needs, whether it is for:

- Genuine Carraro Axle Parts
- Axle Remanufacturing Services
- Technical and Performance Assistance
- Genuine Carraro Axle Components
- Axle Repair and Service Kits

## Carraro axles are commonly found in:

Agco, Argo, Astec, Caterpillar, CNH, Case, Claas, Doosan-Daewoo, Ditch Witch, Eagle Tug, Farmtrac, Fiat, Ford, Gehl, Gradall, Grove, Harlo, Hyster, Ingersoll Rand, International Harvester, JCB, JLG, John Deere, Komatsu, Lull, McCormick, Massey Ferguson, Manitou, New Holland, Pettibone, Renault, Sellick, Steyr, Terex, Valtra, Volvo, Xtreme, Yale, Zetor.